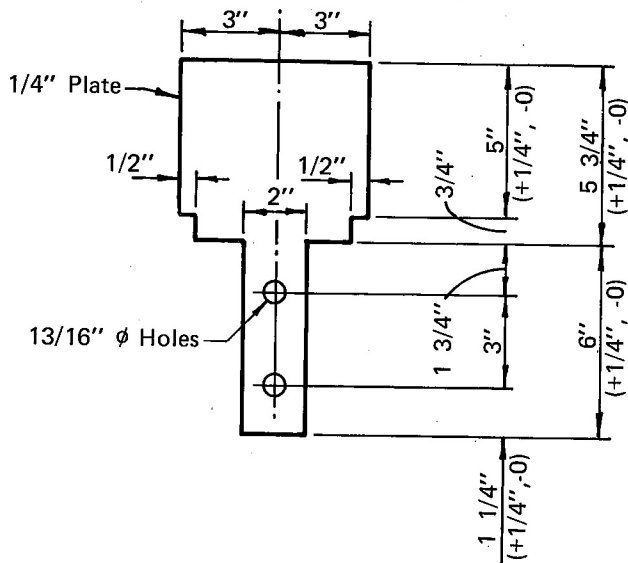


RAIL SUPPORT PLATE



RAIL SUPPORT PLATE (ALTERNATE)

SPECIFICATIONS

Rail support plates shall conform to A.S.T.M. A36 and shall be galvanized in accordance with A.S.T.M. A123 except when corrosion resistant steel plates are requested, in which case plates shall conform to A.S.T.M. A588 and shall not be painted or galvanized.

Welding shall conform to the current requirements of the American Welding Society Structural Welding Code, A.W.S. D1.1.

No punching, drilling, cutting or welding will be permitted after galvanizing.

Dimensional tolerances not shown or implied are intended to be those consistent with the proper functioning of the part, including its appearance, and accepted manufacturing practices.

INTENDED USE

This plate holds rail elements on top of the posts in the standard box beam median barrier steel designs MB3 and MB3B.

**MB3 AND MB3B
STEEL RAIL SUPPORT PLATE**

HM-TF-13

STANDARD

P - 7 - 76